

INSPIRE ACHIEVE AND GROW TOGETHER AS ONE FAMILY



**CHRIST CHURCH PENNINGTON CE SCHOOL**  
**WEEKLY NEWSLETTER**  
**DIARY FOR THE WEEK COMMENCING:**  
**November 1<sup>st</sup>, 2021**



## HALF-TERM BREAK 25<sup>th</sup> – 29<sup>th</sup> OCTOBER

School closes at the usual class times on Friday 22<sup>nd</sup> October and we return on Monday 1<sup>st</sup> November.

Have a lovely half-term break and stay safe!



### GOODBYE AND GOOD LUCK MRS WATSON

Today we say goodbye to Mrs Watson who has worked as a Lunchtime Assistant here at Christ Church school for 30 years! All of the Christ Church family wish Mrs Watson very best wishes for the future.

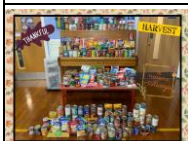


### THE ROYAL BRITISH LEGION POPPY APPEAL

After the half-term holidays we will be supporting The Royal British Legion Poppy Appeal. Please send the correct money into class in a named envelope stating which items you require.

#### Suggested Donations

Zip pull: 50p  
 Reflector: 50p  
 Silicon wristband: £1.00  
 Snap band: £1.50



### HARVEST FESTIVAL

Thank you for all your kind donations for Atherton and Leigh Foodbank.  
 The total weight collected was **114 kilos**.

### ATTENDANCE MATTERS

Happy Splat Day!

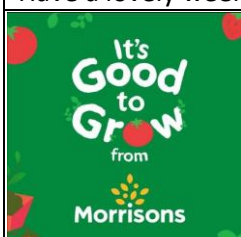
Today, as the last day of a very looong half term, see's the first set of rewards issued to children.

These are in the form of stickers in Splat shapes for the 99 children at 100% attendance.

For those children who have only just missed out on 100% we have traditional looking stickers.

Well done to all our little splattees.

Have a lovely week off and it all starts again on November 1<sup>st</sup>.



### MORRISONS – IT'S GOOD TO GROW

For every £10 you spend (in store or online) at Morrisons, you'll get a Grow Token to help our school get everything we need to get growing. Download the MyMorrisons app today to start collecting Grow Tokens and choose Christ Church CE Primary School to donate them to. School will then be able to exchange the Grow Tokens for FREE gardening equipment to get kids growing.

### WATER BOTTLES

A reminder that we only allow plain water to drink in the classrooms. Juice is not permitted.

### **NASAL FLU IMMUNISATION**

Intrahealth have re-arranged the Nasal Flu immunisation date to 14th December. A copy of the E-consent link is below, Any questions, please contact Intrahealth on the number provided.

Please see below the Flu Nasal E-Consent link for your school. This link is now Open and will close on the 2nd November 2021 If you have any queries Tel: IntraHealth 0333 358 3397

<https://www.nhs.uk/FLU/information?Id=106512&Type=FLU>

Intrahealth have confirmed that you don't need to complete another E-consent for the new date.

**DO NOT CONTACT SCHOOL WITH ENQUIRIES AS WE DO NOT HAVE ANY FURTHER INFORMATION OR DETAILS OF NAMES OF CONSENT.**

### **CAR PARKING**

As building work continues around school, it is important to remember to respect our request to park away from school, this really does make a difference to keep everyone safe. Do not park on the car park opposite school but please can you ensure that you park legally and considerately at all times in the local area. Do not park with tyres on the pavement, on double yellow lines or obstruct resident's driveways. Thank you for your support.

### **APPROVED SNACK REMINDER FOR YEAR 1 TO 6**

Change4Life ([www.nhs.uk/change4life](http://www.nhs.uk/change4life)) recommend looking for snacks that are less than 100 kcal. They need to be snacks the children can eat whilst out on the playground. Here is a recommended list to help you and your child pick a healthy snack: • Fruit (no grapes) • Vegetables • Malt loaf slice • Lower-fat, lower-sugar fromage frais (we ask they are the type in a tube/pouch – not needing a spoon) • Plain rice cakes • Low fat cheese • Low sugar cereal bars (Less than 100 kcal) • Crackers/bread sticks.

**Please note that even if a chocolate bar has less than 100kcal we do not permit this item.**

### **SCHOOL DINNERS**

Just a reminder to order school dinners before 10am each day, otherwise your child will receive a default dinner of jacket potato with cheese and fresh fruit. Remember you may order multiple dinners in advance.

### **PRESCRIPTION MEDICINES**

We do not accept medicines into school unless it is a prescribed medicine that is for a **minimum of 4 times a day**, only then can a member of staff administer one dose for you. Please call into the school office to complete a form and we will secure the medicine in a locked cabinet which you must collect from the office at the end of the day.

### **LABEL ALL CLOTHING**

Please could you ensure all items of uniform are clearly labelled with your child's name. There are a number of items around school that we don't know who they belong to. Could you also check that your uniform at home has the correct name in.

### **POLITE NOTICE:**

No children are allowed on the outdoor equipment in Key Stage 1 or Key Stage 2 playgrounds, either before or after school. Please ensure your child observes these rules. Thank you.



### **NO DOGS ALLOWED**

We do not allow dogs onto the playground, even if carried, with the exception of guide dogs.

### **HIGH SCHOOL APPLICATIONS**

Year 6 parents/carers - Just a reminder that if you have not already applied for your choice of high school, the closing date is 31st October [www.wigan.gov.uk](http://www.wigan.gov.uk)

### **ADMISSIONS FOR RECEPTION 2022**

The application process for admissions to Reception 2022 is now open. If you have a child who is due to start school next year, please remember to complete a Registration of Interest form (available from the school office). You must do this even if you have children already at this school. The closing date to apply for the September intake is 15<sup>th</sup> January 2022 [www.wigan.gov.uk](http://www.wigan.gov.uk)

Ping Pong  
Raffle Winner

**Serena**  
**Year 1**

### **STARS OF THE WEEK**

Reception – Ava, Hannah

Year 1 – Max, Megan

Year 2 – Allessa, Andrew

Year 3 – Joshwa, Courtney

Year 4 – Ellie, Noah, Ted

Year 5 – Maisey, Matilda, Ollie

Year 6 – The Whole of Year 6



*And the child grew and became strong. (Luke*