

INSPIRE ACHIEVE AND GROW TOGETHER AS ONE FAMILY



**CHRIST CHURCH PENNINGTON CE SCHOOL**  
**WEEKLY NEWSLETTER**  
**DIARY FOR THE WEEK COMMENCING:**  
**October 18<sup>th</sup>, 2021**



## HALF-TERM BREAK 25<sup>th</sup> – 29<sup>th</sup> OCTOBER

School closes at the usual class times on Friday 22<sup>nd</sup> October and we return on Monday 1<sup>st</sup> November.

Have a lovely half-term break and stay safe!



### HARVEST FESTIVAL

Thank you for all your kind donations for Atherton and Leigh Foodbank.



### DATES FOR YOUR DIARY

We have put some dates in the school calendar for events during the autumn term. We will try our best to ensure they go ahead but we still need to be aware that restrictions may be put in place and they may have to change.

Friends of School Meeting – Tues 19<sup>th</sup> October, 4pm on Teams. All welcome, see below for details.

Infant Nativity – Wednesday 15<sup>th</sup> December, 2pm and 6.30pm

Junior Carol Service – Thursday 16<sup>th</sup> December at 10am

### NASAL FLU IMMUNISATION

Intrahealth have re-arranged the Nasal Flu immunisation date to 14th December. A copy of the E-consent link is below. Any questions, please contact Intrahealth on the number provided.

Please see below the Flu Nasal E-Consent link for your school. This link is now Open and will close on the 2nd November 2021. If you have any queries Tel: IntraHealth 0333 358 3397

<https://www.nhsimms.uk/FLU/information?id=106512&Type=FLU>

Intrahealth have confirmed that you don't need to complete another E-consent for the new date.

**DO NOT CONTACT SCHOOL WITH ANY ENQUIRIES AS WE DO HAVE ANY FURTHER INFORMATION OR DETAILS OF NAMES OF CONSENT.**

### ATTENDANCE MATTERS

Just 5 more 'get ups' until we reach the end of the first half-term, and what a long half-term this has been. As of this morning we still have 111 children with 100% attendance. That's a fabulous effort considering the lurgy that's going around. If I may remind carers/adults that any absence requests be sent to the office Seesaw address. This includes all medical appointments too. A screenshot of the appointment card/letter will be good. Thanks.

Stay safe and have a lovely weekend. *Mr Southern*

## WORLD MENTAL HEALTH DAY



### **COVID-19**

As cases of Covid continue in school, just to inform you that your child is to come to school as normal but please take your child for a PCR test if they develop any symptoms or are generally feeling unwell and inform the school office. Please note, many children are not displaying classic Covid symptoms who have had positive PCR tests, so please help to keep everybody safe.

### **CAR PARKING**

As building work continues around school, it is important to remember to respect our request to park away from school, this really does make a difference to keep everyone safe. Do not park on the car park opposite school but please can you ensure that you park legally and considerately at all times in the local area. Do not park with tyres on the pavement, on double yellow lines or obstruct resident's driveways. Thank you for your support.

### **APPROVED SNACK REMINDER FOR YEAR 1 TO 6**

Change4Life ([www.nhs.uk/change4life](http://www.nhs.uk/change4life)) recommend looking for snacks that are less than 100 kcal. They need to be snacks the children can eat whilst out on the playground. Here is a recommended list to help you and your child pick a healthy snack: • Fruit (no grapes) • Vegetables • Malt loaf slice • Lower-fat, lower-sugar fromage frais (we ask they are the type in a tube/pouch – not needing a spoon) • Plain rice cakes • Low fat cheese • Low sugar cereal bars (Less than 100 kcal) • Crackers/bread sticks.

**Please note that even if a chocolate bar has less than 100kcal we do not permit this item.**

### **SCHOOL DINNERS**

Just a reminder to order school dinners before 10am each day, otherwise your child will receive a default dinner of jacket potato with cheese and fresh fruit. Remember you may order multiple dinners in advance.

### **PRESCRIPTION MEDICINES**

We do not accept medicines into school unless it is a prescribed medicine that is for a **minimum of 4 times a day**, only then can a member of staff administer one dose for you. Please call into the school office to complete a form and we will secure the medicine in a locked cabinet which you must collect from the office at the end of the day.

### **LABEL ALL CLOTHING**

Please could you ensure all items of uniform are clearly labelled with your child's name. There are a number of items around school that we don't know who they belong to. Could you also check that your uniform at home has the correct name in.

### **POLITE NOTICE:**

No children are allowed on the outdoor equipment in Key Stage 1 or Key Stage 2 playgrounds, either before or after school. Please ensure your child observes these rules. Thank you.

# ENGLISH

## Celebrating English at Christ Church

It has been lovely to see so many children reading lots at home. It is very important that all the children continue to do this regularly. This will not only develop your children's reading fluency and comprehension skills but also develop a life-long love of reading.

CHILDREN FALL IN LOVE WITH BOOKS BECAUSE OF THE MEMORIES CREATED WHEN THEY SNUGGLE UP AND READ WITH SOMEONE THEY LOVE. -RAISING READERS

Mrs Evans recommends this for Year 5 and 6.

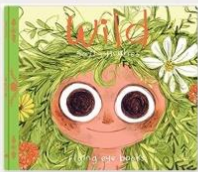


I would like to put a book recommendation on the newsletter each week from the infants and the juniors. Please message me through Seesaw if you have a recommendation that you would like us to share. Thank you Mrs M

A boy has to show bravery- but real deep down inside bravery - and makes an unlikely friend along the way.

## Spelling Shed Stars

Year 2 recommends



### Top Spellers

#	Avatar	Pupil	Groups	Score
1.		Andrew G	Year 2 21/22	6,540,957
2.		Jacob C	Year 4 21/22	4,829,088
3.		Holly G	Year 4 21/22	4,593,539

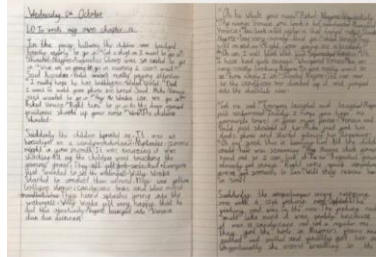
### Top Spelling Groups

#	Group	Score
1.	Year 2 21/22	22,721,408
2.	Year 4 21/22	21,500,000
3.	Year 3 21/22	15,449,000

PIC•COLLAGE

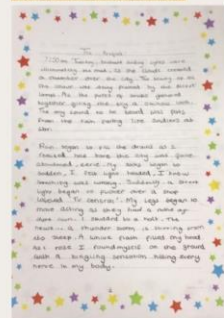
## ★ Star Writing ★

Keira - Year 4



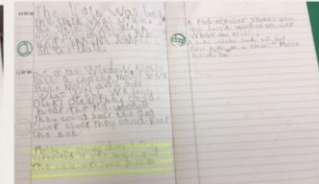
A fantastic piece of narrative writing inspired by Charlie and Chocolate Factory. Keira created her own Chapter 15 from the book.

Sophia - Year 6



'The Prequel'. A piece of creative writing which was based on the telling of a story of how a boy acquires special powers.

Lucy - Year 1



Lucy has impressed Mrs Clarke with her writing.

PROVE, ARGUE AND SHOW YOURSELF AS ONE THAT...



PIC•COLLAGE



NO DOGS ALLOWED ON SCHOOL GROUNDS

## NO DOGS ALLOWED

We do not allow dogs onto the playground, even if carried, with the exception of guide dogs.

### HIGH SCHOOL APPLICATIONS

Year 6 parents/carers - Just a reminder that if you have not already applied for your choice of high school, the closing date is 31st October [www.wigan.gov.uk](http://www.wigan.gov.uk)

### ADMISSIONS FOR RECEPTION 2022

The application process for admissions to Reception 2022 is now open. If you have a child who is due to start school next year, please remember to complete a Registration of Interest form (available from the school office). You must do this even if you have children already at this school. The closing date to apply for the September intake is 15<sup>th</sup> January 2022 [www.wigan.gov.uk](http://www.wigan.gov.uk)

## STARS OF THE WEEK

Reception – Daisy Mae, Robyn

Year 1 – Skylah, Charlotte

Year 2 – Alfie, Millie

Year 3 – Thomas C, Kian

Year 4 – Molly, Keira

Year 5 – Kaiden, Lexie

Year 6 – Max, McKenzie



Ping Pong Raffle Winner

Lucas  
Year 1

And the child grew and became strong. (Luke 2:40)

## **Friends of School**



Don't forget our next Friends of School meeting will be via Teams on Tuesday 19th October at 4pm, if you would like to join us please message Mrs Baines on Seesaw and she will forward you an invite. We will be discussing our future fundraising plans for Christmas and the coming year. Please support us if you can, everyone is welcome to join us and we look forward to organising some more future events for all the children in our school.

